

ACTIVE VIBRATION ISOLATION SYSTEM INSTALLATION REPORT

- 1. Measurement Details**
- 2. Equipment Information**
- 3. Vibration Isolation System**
- 4. Installation Photo**
- 5. Summary**
- 6. Results**

1. Measurement Details

- **Measurement Date**

February 19, 2020

- **Measurement Devices**

1. LAN-XI Data Acquisition Hardware

- Brüel & Kjær 3050-B-040

2. Data Analysis Software

- Brüel & Kjær PULSE LAB SHOP 14

3. Sensors

- PCB Accelerometer

- Model: 393B05

- **Location**

2nd Floor

2. Equipment Information

- **Manufacturer**

TESCAN

- **Model**

LYRA3 FIB-SEM

- **Vibration Specification**

< 10 $\mu\text{m/s}$ below 30 Hz

< 20 $\mu\text{m/s}$ above 30 Hz

3. VIBRATION ISOLATION SYSTEM INFO

Model: DVIA-MB1000



Platform Dimensions	1140 x 910 x 224 mm	
Load Capacity	500 - 1700 kg	
Actuator	Electromagnetic Actuator	
Maximum Actuator Force	Vertical: 40N, Horizontal: 20 N	
Degrees of Freedom	6 degrees	
Active Isolation Range	0.5 - 100 Hz	
Vibration Isolation at 2 Hz	≥90%	
Vibration Isolation at 10 Hz	≥99%	
Input Voltage (V)	AC100 - 240V / 50 - 60 Hz / 1A	
Power Consumption (W)	Maximum 110W, <50 W in normal operation	
Operating Range	Temperature (°C)	5 - 50 °C
	Humidity (%)	20 - 90%
Required Air Pressure	≥ 0.5 MPa	

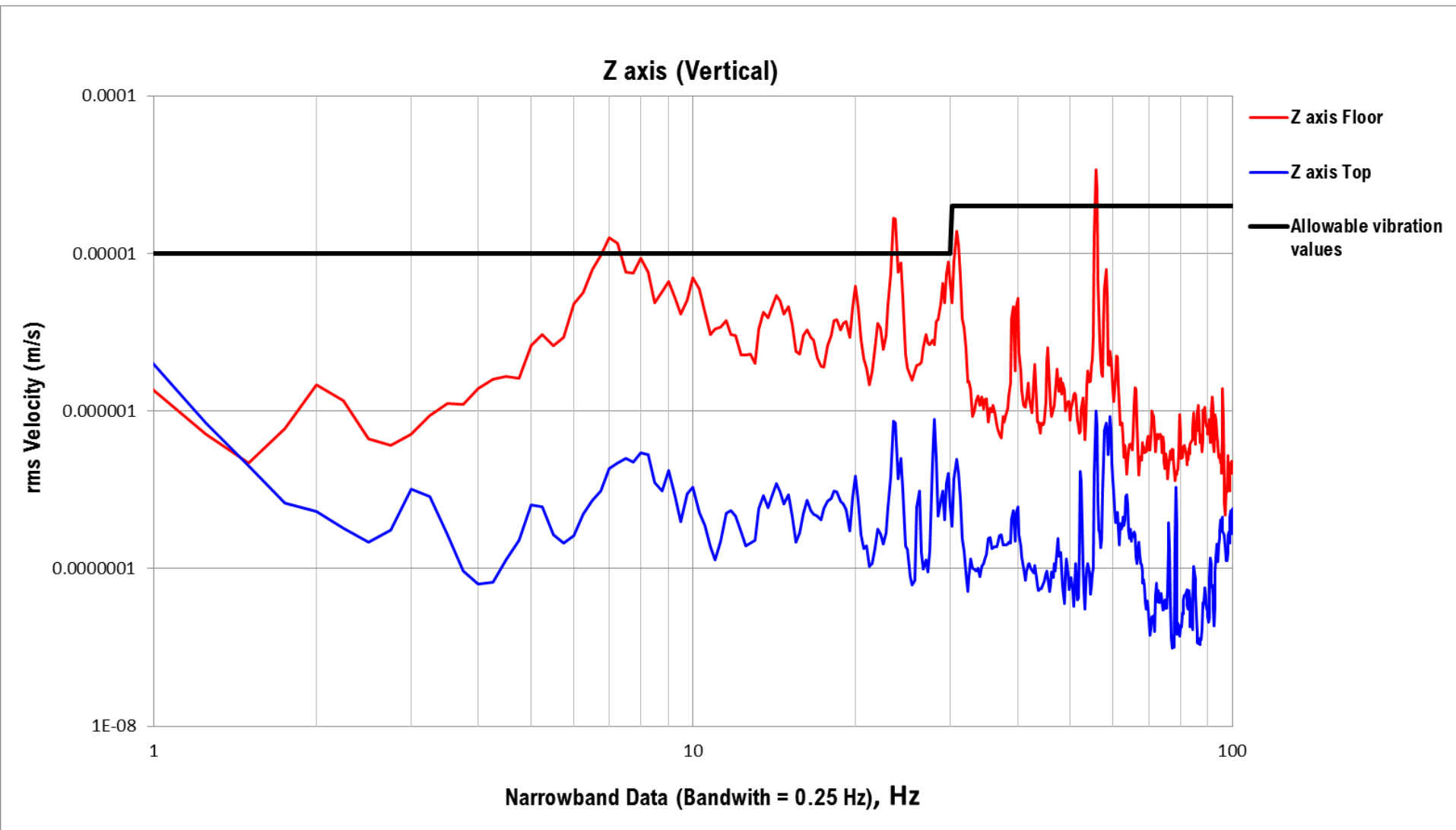
4. Installation Photo



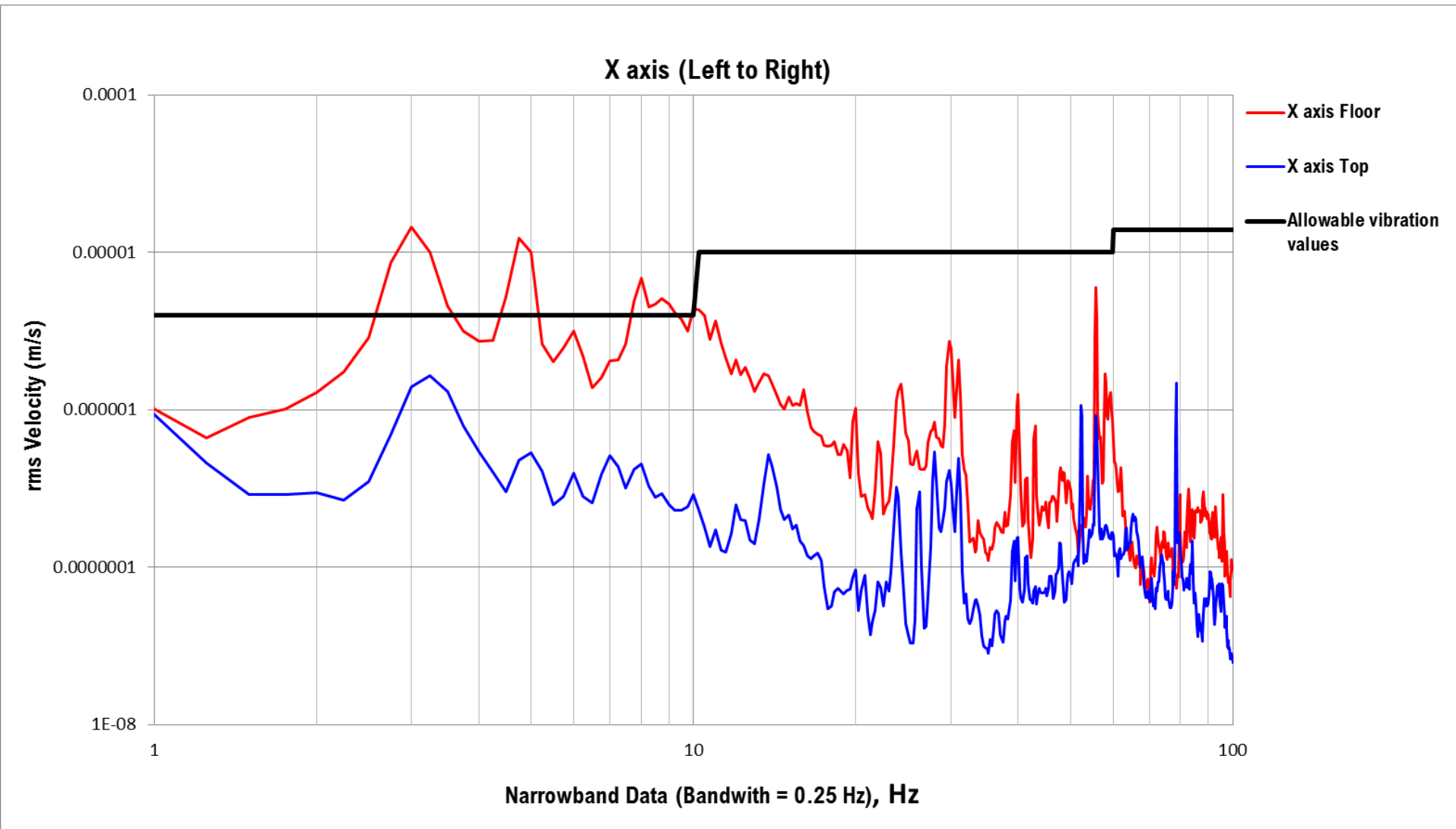
5. Summary

Floor Vibration Specification			
Frequency Range	1 - 100 Hz		
Measurement Direction	Z axis (Vertical)	X axis (Left to Right)	Y axis (Front to Back)
Floor	Fail	Fail	Fail
On Active Vibration Isolation System	Pass	Pass	Pass

6. Results – Z axis (Vertical)



6. Results – X axis (Left to Right)



6. Results – Y axis (Front to Back)

