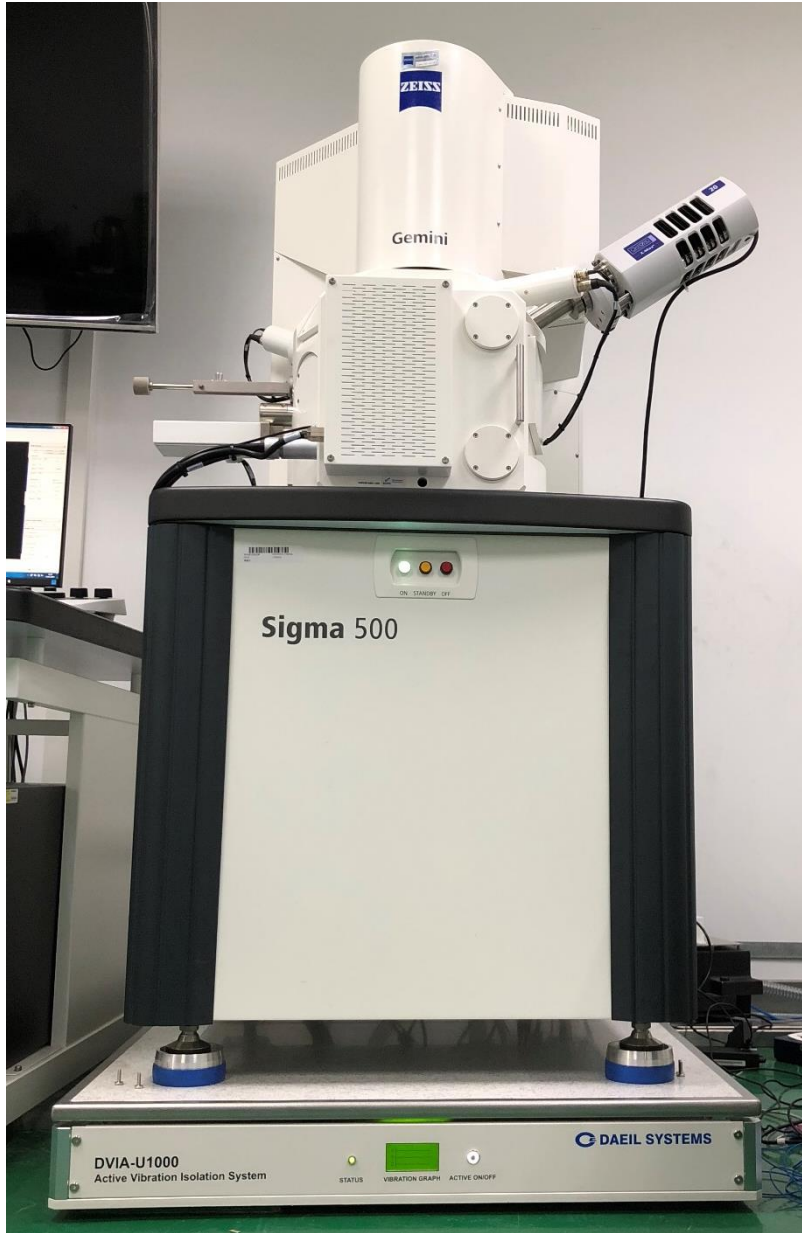


DVIA-UB700 Installation Report

ZEISS SEM GEMINI SIGMA 500



EQUIPMENT	ZEISS SEM GEMINI 2 CROSSBEAM 550
INSTALLATION SITE	1st Floor
Remark	Excellent performance
END USER	Xiamen University of Technology

Setup date: 2019.01.07

Engineer: Sungwon Choi

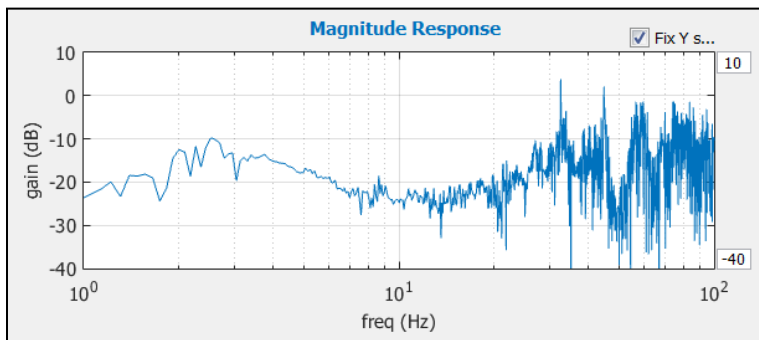
Test report written date: 2019.01.07

※ Summary

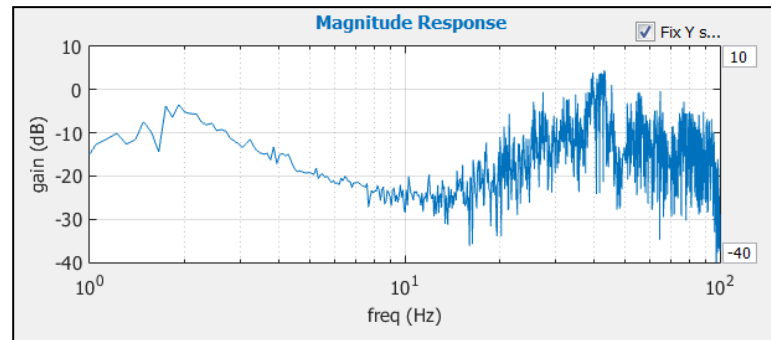
Measurement Points	Vibration Criterion (VC) Curves		
	Z	X	Y
Floor	C	D	D
On active isolation platform	F	F	G

※ DVIA-U Series internal program performance measurement results

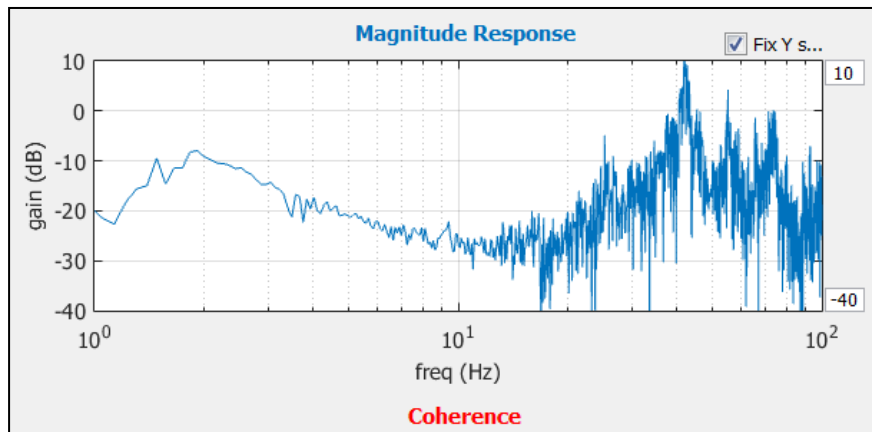
Z axis



X axis

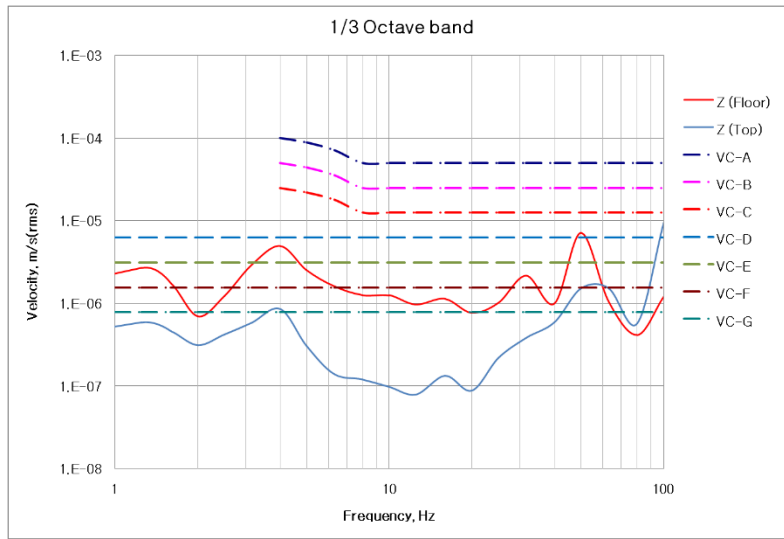


Y axis

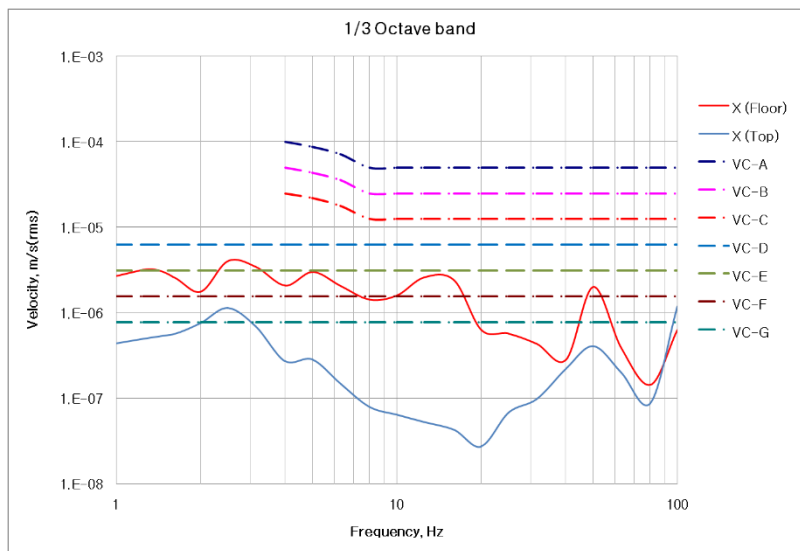


※ Results in Vibration Criterion (VC) Curves

Z axis



X axis



Y axis

